

## DATES TO REMEMBER

### Curriculum Day

Monday 4th November  
No children at School

### Public Holiday

Tuesday 5th November  
No children at School



## FROM THE Principal



Dear Parents and families,

Welcome back to term four. We have had a busy and productive start to the term. As we are a SunSmart school students need to wear hats and sunscreen for outside play. The school provides the sunscreen so please ensure your child has a hat. It would be great if you could leave the hat at school for the term.

Here's the latest update from SunSmart Victoria:



It's that time of year again—time for sun protection.

Being outdoors where students can be active and have fun is great. But being outdoors means students can also be exposed to UV radiation. With UV levels in Victoria now reaching 3 and above, it's time for everyone to start using sun protection again.



It's time to remind students, staff and families at the school to wear sun protective hats, clothing and apply sunscreen before heading outdoors.



When the UV is 3 or above, use all five forms of sun protection:

- Slip on sun protective clothing
- Slap on SPF50 or SPF50+, broad-spectrum, water-resistant sunscreen
- Slap on a broad-brimmed hat
- Seek shade
- Slide on sunglasses



### Changes to sunscreen SPF recommendations

From 1 August 2024, Cancer Council is advising all Australians to use SPF50 or SPF50+ sunscreen. It is still safe to continue to use any remaining SPF30/SPF30+ sunscreen you still have, as it still provides a high level of protection, however when you are looking to purchase new sunscreen, make sure it is SPF50 or SPF50+.



### National Carers Week



On Wednesday the Springvale Park Carer Group and Southern Region Chinese Carer Group organised National Carers Week at our school. This was a free event for parents and carers to relax and enjoy themselves and engage in a lot of fun activities and to connect with one another. It was a huge success and the feedback was fantastic. This was a big undertaking, and I would like to thank our parent group for all their hard work and organisation. I would like to acknowledge the sponsors who made this event possible.

### Noble Park Community Art Show

Once again, we are participating in the Noble Park Community Art Show. This is an annual event that we look forward to each year. We are very proud of the work done by our students. The art show is open all weekend and if parents/carers are interested in attending the address is Ross Reserve, 44 Memorial Drive, Noble Park

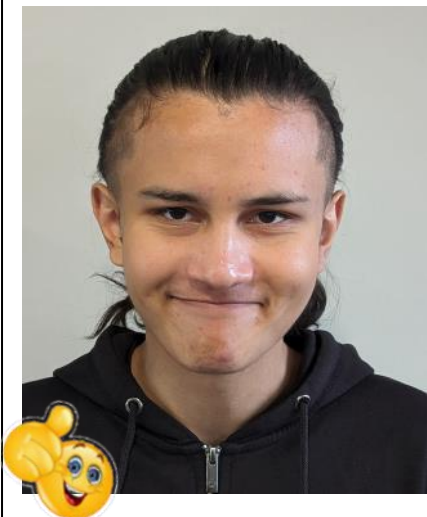


### Royal Melbourne Show

Several of our student's artwork was on display at the Royal Melbourne Show which was very exciting. Our students did really well and won lots of prizes and received commendations for their beautiful creations.



## Principal's Award



This week my Principal's Award goes to Dawood E from Rm 34.

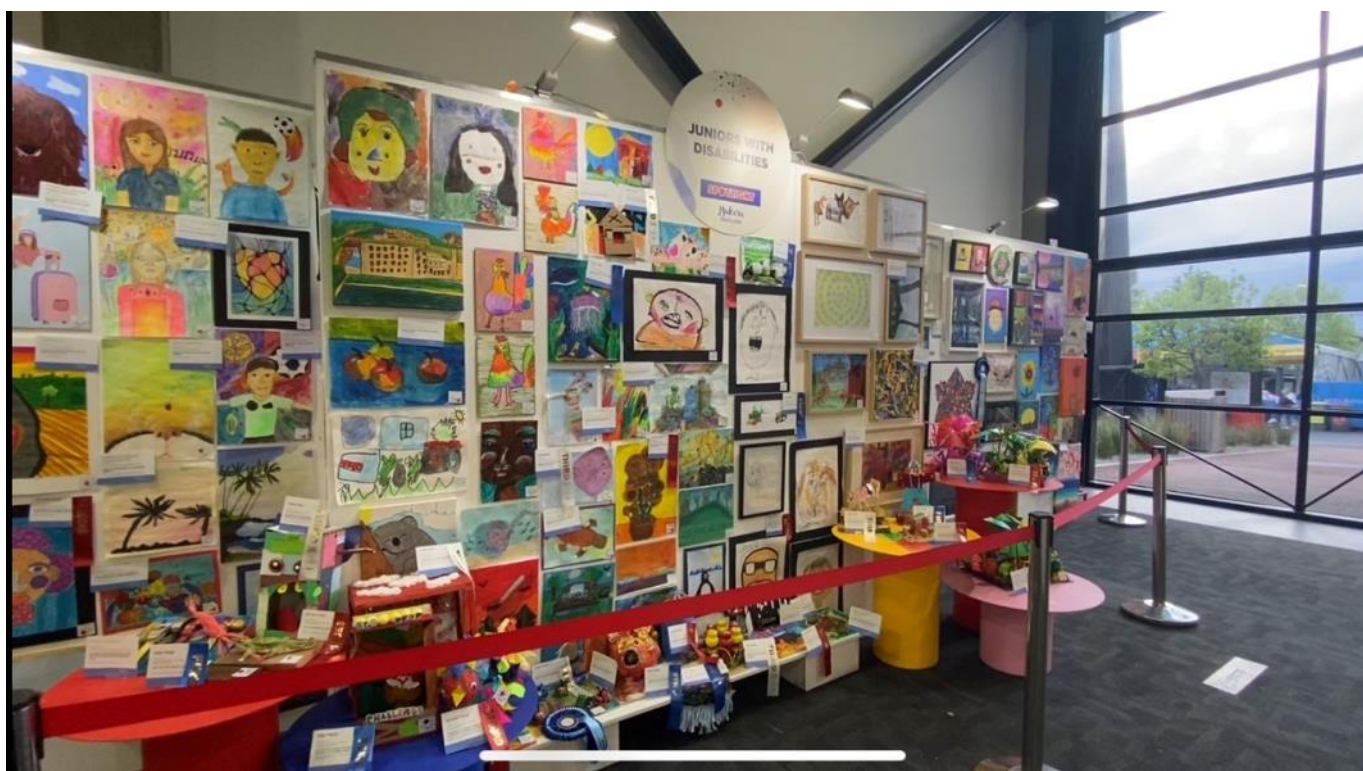
Dawood has been observed helping other students with their classroom tasks, is always concerned for the wellbeing and safety of others and is able to articulate his feelings with increasing detail. Dawood has come a long way from when he first came to this school, and has developed into the kind-hearted, helpful and conscientious student we are delighted to see each morning. His friendliness and willingness to assist others is a trait which sets him apart and makes him such an incredible member of our classroom. Well done Dawood.



Jackie Lowther

Principal

# Melbourne Show Art Entries



# Carer's Week



# Carer's Week



# SPSDS VALUES

Compassion



Integrity

Respect



# SPSDS VISION

*Our vision at SPSSDS is to empower our students by building independence through functional life skills, communication and to equip them for the world in which they live.*

# HAPPY BIRTHDAY -TO YOU-

<i>Name</i>	<i>Date</i>	<i>Room</i>
<i>Joel Y</i>	<i>18th October</i>	<i>Rm 06</i>
<i>Omran M</i>	<i>18th October</i>	<i>Art Rm</i>
<i>YiSuen L</i>	<i>19th October</i>	<i>Rm 33</i>
<i>Suzet Z</i>	<i>24th October</i>	<i>Rm 33</i>
<i>Arnie G</i>	<i>26th October</i>	<i>Rm 08</i>
<i>Jay M</i>	<i>31st October</i>	<i>Rm 04</i>
<i>That H</i>	<i>6th November</i>	<i>Rm 26</i>
<i>Zulfaqar M</i>	<i>10th November</i>	<i>Rm 04</i>
<i>Nur A</i>	<i>11th November</i>	<i>Rm 02</i>
<i>Nisharga M</i>	<i>13th November</i>	<i>Rm 11</i>
<i>Kevin T</i>	<i>13th November</i>	<i>Rm 12</i>
<i>Dihein J</i>	<i>13th November</i>	<i>Rm 21</i>





# EEPS 4

Term 4 is highlighting how fast this year is going. EPPS 4 have had a wonderful time adjusting to school life. We have explored many indoor and outdoor activities. Students have enjoyed a structured timetable, hands on learning, the sensory garden, music and movement and continually being modelled the use of AAC and PEC symbols. EEPs 4 love water play, painting, gross motor rotation stations and cooking classes!





# Room 17

Buzzing with learning!

Bookweek Parade!



Enjoying our trip at Puffing Billy!



READY FOR THE SCIENCE EXPERIMENT!



"We love to celebrate our friend's special day!"



Wednesdays always the best,  
with our favourite and fluffy guests,  
Charlie and Billy!



Making spring crafts and experiments!



Burning the energy at  
We Rock Spectrum Playcentre!



As the year wraps up, we celebrate the  
laughter and friendships in Room 17.  
Welcome to a place where knowledge  
blooms, and every student is encouraged to  
shine. We look forward to more fun next year!

# Royal Melbourne Show 2024

## Art, Craft & Cookery Competition

2024 Melbourne Royal  
Art, Craft and Cookery Competition  
26 Sep - 6 Oct 2024



### RESULTS SUMMARY

#### Exhibitor Details

Springvale Park Special Development School

Student Name	Artwork of Name	Result	Judge Comments
JNR172 - 2D Artwork Prep - Grade 6 (Junior Competition\Juniors with Disabilities\Primary)			
Jiya R. (Room 6)	Beautiful Farm	1st Prize	Skilful use of textures/colour to create interest.
Aerlanna O. (Room 16)	Mother hen & her three chicks	2nd Prize	Very strong initial impression.
Muhammad Zaid (Rom 5)	Sunlit barn	3rd Prize	Skilful use of textures/colour to create interest.
Hilda T. (Room 16)	Oil Pastel Rhythms	Commended	Skilful use of textures/colour to create interest. Good use of colour to create movement and texture.
Kurt L. (Room 11)	Farm Landscape Collage	Commended	Skilful use of textures/colour to create interest.
JNR173 - Sculpture and 3D Form Prep - Grade 6 (Junior Competition\Juniors with Disabilities\Primary)			
Ayden N. (Room 19)	Muddy delight	1st Prize <b>JNR1715 - BEST IN SHOW JUNIOR WITH DISABILITY</b>  COMMITTEE CREATIVE COMMENDATION AWARDS (CCC)	Very strong initial impression.  Additional Comments: Strong visual impact.
Teejay L. (Room 12)	Cheerful smiles	2nd Prize	Skilful use of textures/colour to create interest.
Nisharga (Shaan) M. (Room 11)	Beauty in macro	3rd Prize	Fun and cheerful concept.
Charlotte W. (Room 18)	Bottle Swan Sculpture	Commended	Playful use of colour.
JNR174 - Miscellaneous Article Prep - Grade 6 (Junior Competition\Juniors with Disabilities\Primary)			
Sophie G. (Room 8)	Milk Cow	COMMITTEE CREATIVE COMMENDATION AWARDS (CCC)  Very Highly Commended (VHC)	Very strong initial impression.

Alexander K. (Room 13)	Pasta farm scene	<b>COMMITTEE CREATIVE COMMENDATION AWARDS (CCC)</b>  Very Highly Commended (VHC)	Very strong initial impression.
Daniyal N. (Room 10)	Billy the dog	<b>2nd Prize</b>	Skilful use of textures/colour to create interest.
Nas (Nasir) R. (Room 15)	Bees of Joy	<b>3rd Prize</b>	Skilful use of medium to create interest.
<b>JNR176 - Celebrating Agriculture Challenge: Miscellaneous Article Prep - Grade 6 (Junior Competition\Juniors with Disabilities\Primary)</b>			
Rose T. (Room 15)	Crafted guardian	<b>1st Prize</b>	Fun and joyful, brings a smile.
Roksa R. (Room 10)	Sacred cow	<b>2nd Prize</b>	Skilful use of textures/colour to create interest.
Celine V. (Room 15)	Yellow field	<b>3rd Prize</b>	Skilful use of medium to create interest.
<b>JNR183 - Sculpture and 3D Form Year 7 - 12 (Junior Competition\Juniors with Disabilities\Secondary)</b>			
Cooper C. (Room 34)	Feeding frenzy	<b>3rd Prize</b>	Demonstrates creativity and originality.
Monawara S. (Room 28)	Felted Elegance horses	<b>Highly Commended (HC)</b>	Skilful use of textures/colour to create interest.
<b>JNR184 - Miscellaneous Article Year 7 - 12 (Junior Competition\Juniors with Disabilities\Secondary)</b>			
Amach L. (Room 29)	Pink paradise	<b>1st Prize</b>	Excellent composition.
Jamieson T. (Room 29)	Rain forest	<b>2nd Prize</b>	Skilful use of medium to create interest.
Pat V. (Room 29)	Tree Alive	<b>3rd Prize</b>	Good balance of light and dark.
<b>JNR186 - Celebrating Agriculture Challenge: Miscellaneous Article Year 7 - 12 (Junior Competition\Juniors with Disabilities\Secondary)</b>			
Amy C. (Room 28)	Egg drop challenge	<b>1st Prize</b>	Skilful use of textures/colour to create interest.
Kathleen K. (Room 20)	Collage of chicken	<b>2nd Prize</b>	Skilful use of textures/colour to create interest.
Aaron A. (Room 26)	Wind swirls	<b>3rd Prize</b>	Very strong initial impression.

**WELL  
DONE**



***Congratulations  
To all participants***

# CONGRATULATIONS!!!

## Melbourne Royal Art & Craft Competition



The Best in Show Junior with Disability awarded to Ayden N. (Piggy Muddy Delight)



Rose T. (Crafted guardian)



Amy C. (Egg Drop Challenge)



Aaron A. (Wind Swirls)



Roksa R. (Sacred cow)



Pat V. (Tree Alive)



Kathleen K. (Collage of Chicken)



Celine V. (Yellow Field)



Teejay L. (Cheerful Smiles)



Cooper C. (Feeding frenzy)

# Curriculum Day

Monday

4th November 2024



No Students at School  
Teachers will participate in  
Professional Learning



School Returns  
Wednesday  
6th November 2024

THE MAGIC RETURNS IN 2024



★★★★★  
MELBOURNE'S  
**CHRISTMAS**  
WONDERLAND  
★★★★★

PRESENTED BY  
smoothfm  
91.5

29 NOVEMBER - 24 DECEMBER

★★★★★

**CAULFIELD RACECOURSE**

STATION STREET, CAULFIELD EAST, VIC 3145

★★★★★

BOOK NOW AT **ticketmaster**® OR CALL 0400 881 007

MELBOURNESCHRISTMASWONDERLAND.COM.AU



nowa100



ticketmaster®



SHOWTIME ATTRACTIONS





# Please

## KEEP THE GATE CLOSED AT ALL TIMES



For the safety of all our students,  
please close the front gate after yourself.

If you prefer, there is a pedestrian gate  
immediately in front of the School Office.

Please drive slowly through the carpark  
and beware of students and staff.

